



**INFORMATION FOR RECOGNITION OF DISEASE-FREE STATUS FOR CATEGORY C DISEASES OF AQUATIC ANIMALS IN ACCORDANCE WITH CHAPTER 4 OF PART II OF [REGULATION \(EU\) 2020/689](#) AND ARTICLE 11 OF COMMISSION IMPLEMENTING [REGULATION \(EU\) 2020/2002](#)**

<b>Requirements and information</b>	<b>Information, explanation and justification</b>
<b>Identification of the programme</b>	
1. Date of submission	10 November 2021 Updated 15 November 2021 in point 4 and with point 11
2. Name of Member State and details of contact point	Denmark  Danish Veterinary and Food Administration (DVFA), Stationsparken 31-33, 2600 Glostrup. Phone: +45 72276900. E-mail: <a href="mailto:14@fvst.dk">14@fvst.dk</a>
3. Name of Category C disease	IHN – Infectious Haematopoietic Necrosis
4. Identification of the grounds for recognition of disease-free status	Continued IHN free status of a historically free compartment under surveillance conducted in accordance with Annex VI, part II.  (d) completion of an eradication programme
5. Territorial scope of the eradication programme	(b) Compartment  <u>Address:</u> Herredsvejen 65 Hørup 9632 Møldrup CHR: 92158  <u>Coordinates:</u> Latitude: 56.58 Longitude: 9.48

	<p><u>Farm details:</u>  Farm production: Brood stock  Water supply: Fount/drain  Discharge of effluents: Stream</p> <p><u>Farm productivity:</u>  Nursery: 1,000 (kg/y)</p> <p><u>Description of compartment:</u>  The compartment consists of one building and two outdoor broodstock facilities. The building includes hatchery and incubation. All facilities have separate entrances.</p> <p>The dead fish tank is located outside the premises of the compartment.</p>
--	--

## 6. Dependency of compartments

(a): Independent compartments as referred to in point (a) of Article 73(2) of Regulation (EU) 2020/689

<p>(i) The water is supplied through a water treatment plant which inactivates the relevant pathogen or that the water is supplied directly from a well, a borehole or a spring</p>	<p>The water is supplied from a spring and two wells (A and B on the compartment map).</p>
<p>(ii) Where such water originates from a source outside the establishment, it is channelled directly to it by means which afford appropriate protection from infection</p>	<p>The water is channelled directly to the compartment, from the spring and wells through pipes. The water supply has no risk of migrating aquatic animals.</p>
<p>(iii) There are natural or artificial barriers that prevent aquatic animals from entering each establishment in the compartment from surrounding natural waters</p>	<p>Inlet: see (ii)  Outlet: The compartment is protected from aquatic animals by a 10 mm drain trap, a sedimentation pond, a plant lagoon and a 1 m weir to Hørup Møllebæk stream.</p>

<p>(iv) Where appropriate, the establishments in the compartment are protected against flooding and infiltration of water from surrounding natural waters</p>	<p>Due to the location of the compartment high above the recipient water (Hørup Møllebæk stream), there is no risk of flooding.</p>
<p><b>7. Statement</b></p>	
<p><b>Statement</b> confirming that the relevant general criteria in accordance with point (a) of Article 73(1) of that Regulation for aquatic compartments, are complied with</p>	<p>(i) The territorial scope complies with point (c) of Article 47(2) of Regulation (EU) 2020/689;</p> <p>(ii) The surveillance for the disease complies with the requirements laid down in Articles 3(2), 4 and 6 to 9 of Regulation (EU) 2020/689; Until 21 April 2021 Denmark had Danish legislation based on the Implementing decision (EU) 2015/1554 (referring to Council Directive 2006/88/EC), and respectively Regulation 2017/625 and Regulation 2004/854. Furthermore, Denmark has an executive order no. 1324 of 26/11/2015, replaced by executive order no. 1451 of 12/12/2019 according to Council Directive 2006/88/EC.</p> <p>(iii) Operators comply with obligations as regards biosecurity measures as laid down in Article 10 of Regulation (EU) 2016/429; and Danish executive order no. 965 of 18/07/2013.</p> <p>(iv) Operators comply with the disease control measures relevant to the disease in the event of a suspicion or confirmation; Delegated Regulation 2020/689 and Danish executive order no. 1324 of 26/11/2015, replaced by executive order no. 1451 of 12/12/2019 according to Council Directive 2006/88/EC.</p>

	<p>(v) The establishment of which the compartment is comprised of was approved for brood stock in 2017; The establishment was approved according to Danish executive order no. 965 of 18/07/2013.</p> <p>(vi) Traceability of the animals from the targeted animal population is ensured;</p> <p>(vii) When moved, the animals from the targeted animal population or products thereof complied with the animal health requirements for movement within the Union or for entry into the Union of those animals and products thereof, and Danish executive order no. 965 of 18/07/2013.</p>
--	--

**11. When the grounds for recognition of disease-free status is based on the completion of an eradication programme, for each year of the programme, information must be supplied concerning:**

(a): the aquaculture establishments and where relevant, the sampling points in the wild in the zone/compartment:

<p>(i) Number of approved aquaculture establishments in the programme</p>	<p>There is one approved aquaculture establishment in the compartment.</p>
<p>(ii) Maps showing approved and registered aquaculture establishments, and where relevant, sampling points in the wild</p>	<p>See map of compartment.</p>
<p>(iii) Number of aquaculture establishments, and where relevant, sampling points in the wild, out of the total number of aquaculture establishments and sampling points in the wild, which are not infected</p>	<p>One out of one aquaculture establishment in the compartment is not infected.</p>
<p>(iv) Number of aquaculture establishments, and where relevant, sampling points in the wild, out of the total number of aquaculture establishments and sampling points in the wild, with confirmed cases</p>	<p>No aquaculture establishments in the compartment has confirmed cases.</p>

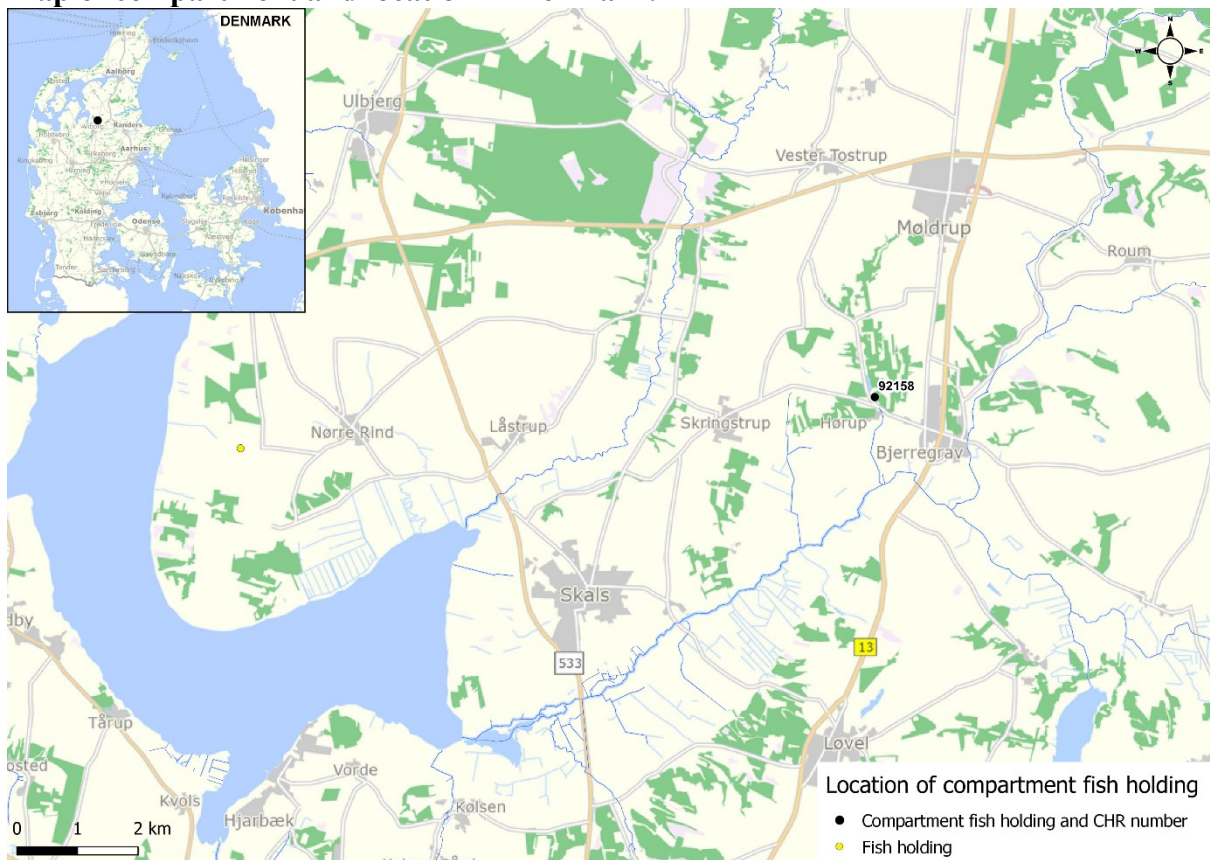
<p>(v) Number of new aquaculture establishments, and where relevant, sampling points in the wild, out of the total number of aquaculture establishments and sampling points in the wild, with confirmed cases</p>	<p>There are no new aquaculture establishments in the compartment with confirmed cases.</p>
<p>(b) animal health visits and sampling which have been completed</p>	
<p>(i) Number of health visits per approved and where relevant, per registered aquaculture establishment</p>	<p>See table.  Since 21 April 2021, the establishment has been subject to health visits according to Delegated Regulation 2020/689, annex VI, part II, section 4 and 5.  Until 21 April 2021, the establishment has been subject to health visits and sampling according to executive order no. 1324 of 26/11/2015, replaced by executive order no. 1451 of 12/12/2019 (according to Council directive 2006/88/EC).</p>
<p>(ii) Number of samplings per approved, and where relevant, per registered aquaculture establishment, or samplings in wild populations</p>	
<p>(iii) Number of animals sampled at each sampling event</p>	
<p>(iv) Species sampled</p>	
<p>(v) Results from each laboratory examination (positive/ negative for the pathogen in question)</p>	
<p>(vi) Results from each clinical inspection</p>	
<p>(vii) Water temperature at the time of sampling</p>	

**Table of animal health visits and sampling completed since 1 April 2016**

Health visits	Samplings	Animals tested per sampling	Species sampled	Result of laboratory analysis	Result of clinical inspection	Water temperature at sampling
1*	1*	30	Rainbow trout / Onchorhynchus mykiss),	Negative	No clinical signs of IHN	14 °C or below

\* Per year, at least.

**Map of compartment and location in Denmark:**





- Orange line: water outlet
- Blue with yellow arrow: water flow
- Green stars: entrances
- Green circle: Oxygen
- Blue circle: Dead fish tank
- Anlæg = Outdoor broodstock facility
- Afsivningsplatform = Seepage pit
- Slambassin = slurry basin
- Bundfældning = sedimentation pond
- Kummehus = incubation and nursery